

# LOCAL SCHOOL PICNIC DETAILS

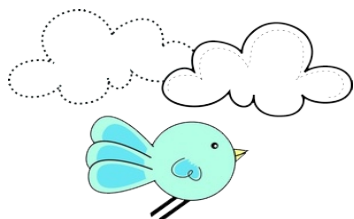
We organize local (in & around Delhi) school picnics as well.

Below are the package details of various local picnic venues in & around Delhi/ NCR. Kindly choose the venue of your choice so that we can send more details of that venue and further confirm your booking at venue.

## ENTRY PACKAGES 2018

(GST extra wherever applicable)

VENUE	AMUSEMENT PARK ENTRY	WATER PARK ENTRY	COMBO ENTRY TICKET	FREE TEACHER
<b>ADVENTURE ISLAND</b> Rohini, Delhi	Actual ticket = Rs.390	N.A.	N.A.	10:1
<b>WORLD of WONDERS</b> Noida, (U.P)	Actual ticket = Rs.410 Ticket on Sun. = Rs.460	Actual ticket = Rs.425 Ticket on Sun. = Rs.460	Actual ticket = Rs.560 Ticket on Sun. = Rs.630	10:1
<b>KIDZANIA</b> Noida, (U.P)	Tue - Fri – Shift 1st (10 AM - 3 PM) Actual ticket = Rs.875  Pre Nursery grades :- Actual ticket = Rs.650 Monday Closed. Lunch included.			15:1
<b>FUN n FOOD</b> Delhi - Gurgaon Border	Actual ticket = Rs.350 (kindly confirm before finalizing)	Closed due to winters	N.A	10:1
<b>APPU GHAR (OYSTERS)</b> Sec - 29, Gurgaon	NO Amusement Park Only Water Park	Actual ticket = Rs.375	NO Amusement Park Only Water Park	10:1
<b>AAPNO GHAR</b> Manesar, Gurgaon	Actual ticket = Rs.575	Actual ticket = Rs.575	Actual ticket = Rs.815	10:1
<b>MOGLI ADVENTURES</b> Dharuhera, Jaipur Highway	Latest adventure in town. Includes food.	Group size 30 - 200 students = Rs.500 per head Group size 201 - 500 students = Rs.475 per head Group size 500+ students = Rs.425 per head		15:1
<b>LOHAGARH FARM</b> Badshapur, Gurgaon	Exposure to rural life. No rides. Includes food.	Actual ticket: Rs.500 per student		15:1
<b>SURAJGARH FARM</b> Badshapur, Gurgaon	Exposure to rural life. No rides. Includes food.	Actual ticket: Rs.500 per student		15:1
<b>PRATAPGARH FARM</b> Jhajjar (Haryana)	Exposure to rural life. No rides. Includes food.	Upto class VIII = Rs.425	Class IX - XII = Rs.425	15:1



# FOOD PACKAGES 2018

VENUE	LUNCH OPTION 1	LUNCH OPTION 2	LUNCH OPTION 3
<b>ADVENTURE ISLAND</b> Rohini, Delhi	<b>Lunch @ Rs.190</b> Rajma, Jeera rice, Aloo matar, Paneer makhani, Pickle, Naan /roti, Green salad, Boondi raita, Ice cream (small)	<b>Lunch @ Rs.150</b> Rajma, Jeera rice, Aloo matar, Pickle, Plain naan/ Roti, Green salad, Ice cream (small)	<b>Lunch @ Rs.110</b> Rajma Rice, Pickle, Green salad, Boondi raita, Ice Cream (small)
<b>WORLD of WONDERS</b> Noida (U.P)	<b>Lunch @ Rs.200</b> Rajma, Paneer Makhani, Aloo Matar, Jeera Rice, Roti/Naan, Tossed Salad & Pickle, Boondi Raita, Ice-Cream (One Small Cup)	<b>Lunch @ Rs.165</b> Rajma, Aloo Matar, Jeera Rice, Roti/Naan, Salad, Pickle, Ice Cream (One Small Cup)	<b>Lunch @ Rs.135</b> Rajma Rice, Pickle, Boondi Raita, Salad, Ice-Cream (One Small Cup)
<b>KIDZANIA</b> Noida, (U.P)	<b>Shift 1st – Lunch included in entry package:</b> Option 1 – 1 Frooti (small), Rajma Rice, Chhole Rice, Veg Raita & gulab jamun Option 2 – 1 Frooti (small), Pao Bhaji, Veg Noodles & Gulab jamun		
<b>FUN n FOOD</b> Delhi - Gurgaon Border Delhi  <b>GST 5% extra</b>	<b>Standard Buffet Rs.200</b> Matar paneer , Seasonal veg, Dal makhni, Jeera rice, Raita, Salad, Naan, Gulab jamun	<b>Mini Buffet Rs.130</b> Rajma rice or Chole rice or Kabuli chana bryani with raita.	<b>No other options.</b>
<b>APPU GHAR (OYSTERS)</b> Sec 29, Gurgaon Haryana	<b>Lunch @ Rs. 225</b> Green salad, Dal makhni, Seasonal veg, Shahi paneer, Jeera rice, Raita & Ice cream	<b>Lunch @ Rs.150</b> Rajma rice, Aloo bhaji, Roti Salad & Ice cream	<b>Lunch @ Rs.130</b> Rajma rice Or Chole rice Salad & Ice cream
<b>AAPNO GHAR</b> Manesar, Gurgaon Haryana	Meals included in entry package cost.		
<b>MOGLI ADVENTURES</b> <b>LOHAGARH FARM</b> <b>SURAJGARH FARM</b> <b>PRATAPGARH FARM</b>	Breakfast & Lunch included in entry package cost.		

## IMPORTANT NOTE

- 1) To confirm your booking, 100% advance amount for meal package (if opted) to be paid atleast one week prior to your picnic date. Complete payment to be made at arrival and before entry.
- 2) Costume rent is not included in any of the packages and students and other guests can bring their own proper swimming costumes (synthetic or nylon) if they wish to or can get on rent.
- 3) Taxes extra wherever applicable.
- 4) Transportation, if required, will cost extra.
- 5) We are not responsible in case rides / swings do not operate in rainy season or due to any technical snag.
- 6) Terms and conditions of venue are applicable.
- 7) In case of any dispute, decision of management of the venue will be final.
- 8) Advance paid to us for school group booking is NOT refundable in any case (be it rescheduling/ postponement). Not only this, in case of rescheduling or cancellation of the group booking the school would be liable to make the total food payment according to the minimum number of students confirmed to us.

**NOTE: At most of the venues, Ice cream (if available in menu) is served at exit at group departure.**

**For more details, kindly contact:**

**NEHA SINGH (981111 0507) | SUDHIR YADAV (95999 50999)**

